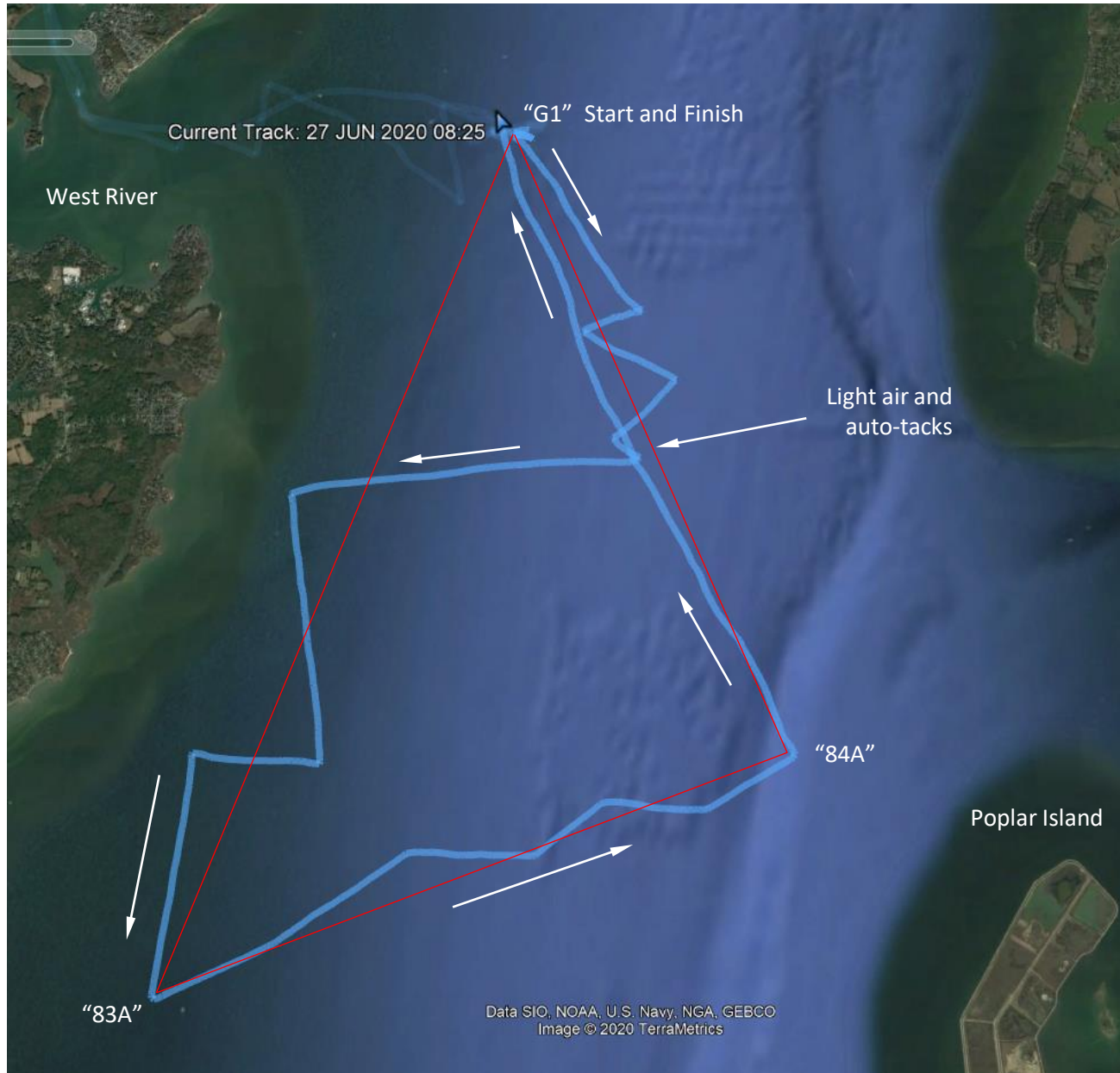


Poplar Island Race June 27, 2020

Pearson 30 "Old Blue"



"Old Blue" and I sailed down from Whitehall Bay the afternoon before. Blew out our 1979 orange and yellow spinnaker on the trip so had to switch racing classes from Solo Spinnaker to Solo Jib and Main.

The wind was from the South at 10 kts for the start. We could barely lay the pin ("G1") so tried a port tack start. Didn't get in any trouble but couldn't cross the fleet so tacked to starboard. Up with leading faster boats but they soon rolled on by.

Wind went light and seemed to be filling in to the West so took a stb'd tack to the western shore. In hindsight we probably could have laid "84A" at that point and should have just rode it down to go clockwise around the course. Most other boats did that.

Saw "clockwise" boats rounding "83A" to head home before we even got there. Feeling pretty dumb, but then passed other clockwise boats closer to our handicap halfway between "83A" and "84A". Things were looking better. It was a run to "84A", half wing-on-wing and half starboard tack broad reach. There was an Alerion Express nearby but with their little jib they had to sail wider angles and lost some ground. There was also another Pearson 30 on that leg and we gained some on them.

After rounding "84A" we had a romping beam reach. We were probably overcanvased but didn't want to lose any time in lulls. The Alerion stayed the same distance behind that whole reach leg. Pretty boats shouldn't be that fast!

When the results came out, "Old Blue" placed 3rd in the Solo JAM class. This was way better than expected. Our lesson learned for races where you can go around either way: when possible, avoid sailing the longest leg to windward.

Thunderstorms were forecast for the evening. They came through as promised so no sharing of sea stories with other boats but it was a fun weekend.